



# VILLAGE ESTATES



• EST.1993 •

93 Main Road, Sidcup, Kent DA14 6ND

Tel: 0208 302 1002

www.village-estates.com

Email: sidcup@village-estates.com



**LOW MONTHLY SERVICE CHARGES**

**IDEAL FIRST BUY OR BUY TO LET**

**WELL PRESENTED  
THROUGHOUT**

**ALLOCATED PARKING SPACE**

**LONG LEASE 130+ YEARS**

**MODERN WALKIN SHOWER  
ROOM**



**11 Lyndhurst Willow Grove**  
Chislehurst, BR7 5QP

**Guide Price £250,000-  
£270,000**

Conveniently located for Chislehurst High Street is this well-proportioned and presented **DOUBLE BEDROOM**, apartment comes with a **LONG LEASE** and **NO GROUND RENT**. Offered in good decorative order and with **ALLOCATED PARKING** your early viewing is highly recommended.

**EPC RATING: D**

**COUNCIL TAX BAND: C**

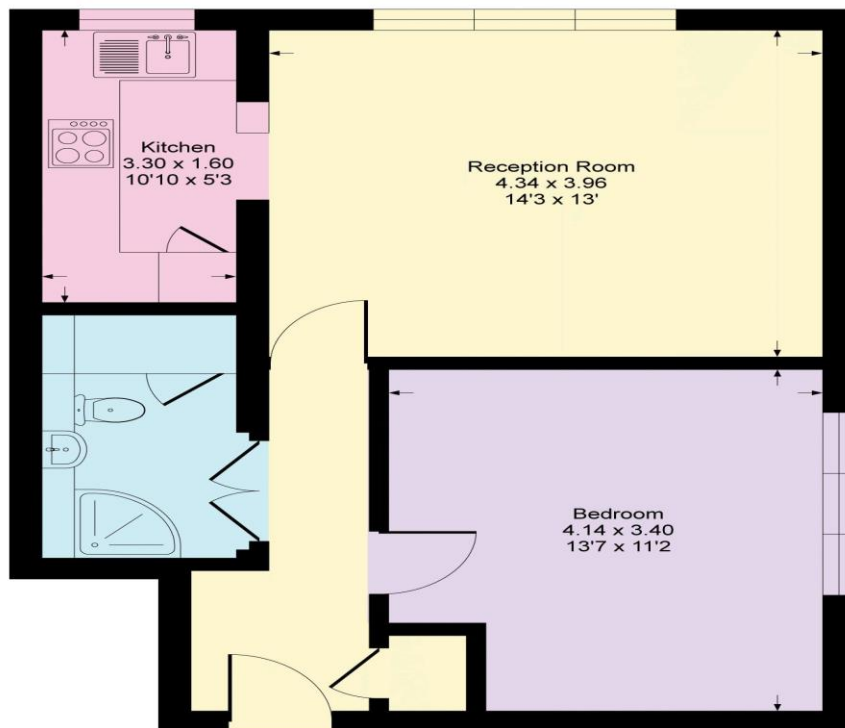
**TENURE: Leasehold**

**LEASE TERM: 189 Years from 24 June 1967**



**Willow Grove, BR7**

Approximate Gross Internal Area = 48 sq m / 521 sq ft



IN

**Second Floor**

**CONSUMER PROTECTION FROM UNFAIR TRADING REGULATIONS 2008**

Please note that any services, heating system or appliances have not been tested, and no warranty can be given or implied as to their working order. You are advised to obtain verification from your solicitor or surveyor. References to the tenure of a property are based on information supplied by the seller. We have not had sight of the title documents and a buyer is advised to obtain verification from their solicitor. Items shown in photographs are not included unless specifically mentioned within the sales particulars, but may be available by separate negotiation. Whilst every attempt has been made to ensure the accuracy of the floor plan contained here, measurements of doors, windows, rooms and any other items are approximate and no responsibility is taken for any error, omission, or mis-statement. We advise you to book an appointment to view before embarking on any journey to see a property, and check its availability. The accuracy of these details are not guaranteed and they do not form part of the contract.